



# SOLUÇÕES PARA AEROPORTOS MODERNOS







# RESUMO DAS SOLUÇÕES



## REST

Regular passenger  
seating area and VIP  
lounge area



## OFFICE

Charging bar and chair  
combination



## ORIENTATION

Service counters,  
isolation drawstrings,  
signage, public trash  
cans, trolleys



## SOCIAL

Lounge sofa with rechargeable  
coffee table combination



# RESUMO DAS SOLUÇÕES

GP Cabling  
and Security  
Solutions

- Assentos de passageiros
- Contadores
- Assentos especiais
- Mesas Recarregáveis & Cadeiras de bar
- Latas de lixo públicas
- Correias de Isolamento
- Série de vagões de bagagem
- Informação



# LONGARINAS



# LONGARINAS

Projetos customizados

Cores do PU, tomadas USB, NBR.

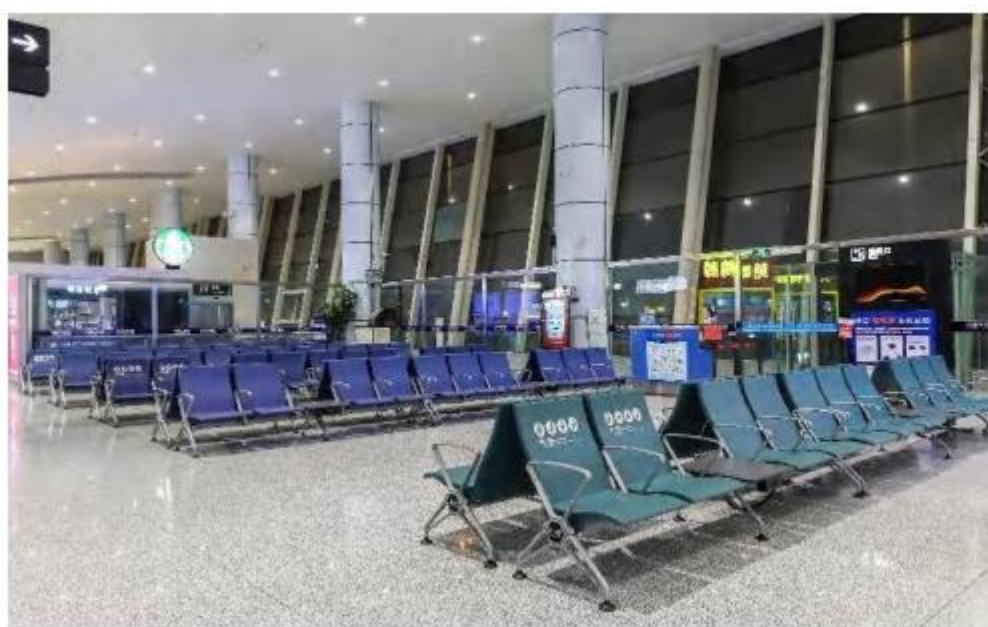




# LONGARINAS

Projetos customizados

Cores do PU, tomadas USB, NBR.



# CARACTERÍSTICAS TÉCNICAS



## Ergonomic

The shape of the seat and the back adapts to the human body ensuring a comfortable and healthy posture.



## Fire resistance

The finish of the seat and backrest can be selected from stainless steel, iron, aluminum alloy or PU, which all have fire retardant features.



## Maintenance

OSHUJIAN seating doesn't require any kind of special maintenance but regular cleaning with common non-aggressive products and it has 5-years warranty.

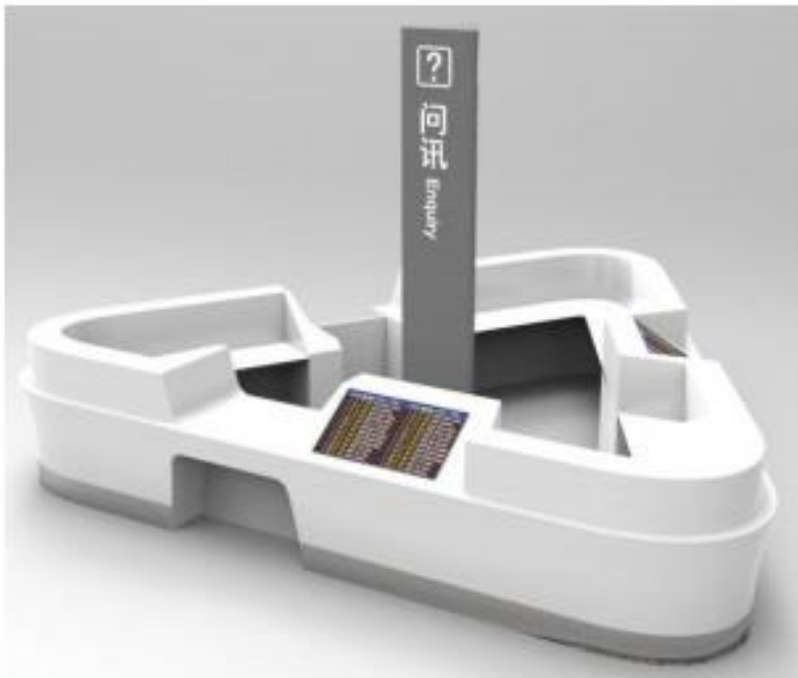


## Cleaning

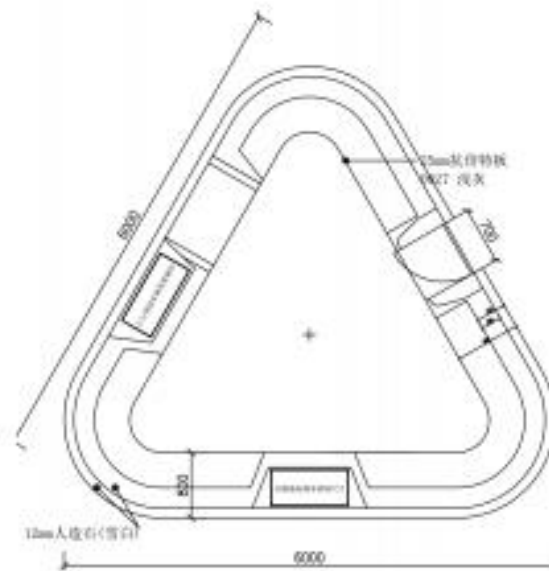
Easily removed the most common stains. The stains caused by mineral oils, lubricants, vegetable oils and water-soluble agents can be erased with a cloth or sponge and watery non-aggressive liquid detergents.



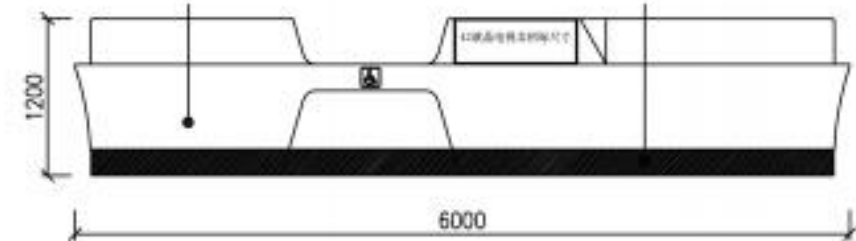
# BALCÃO DE INFORMAÇÃO



## Reference Drawings:



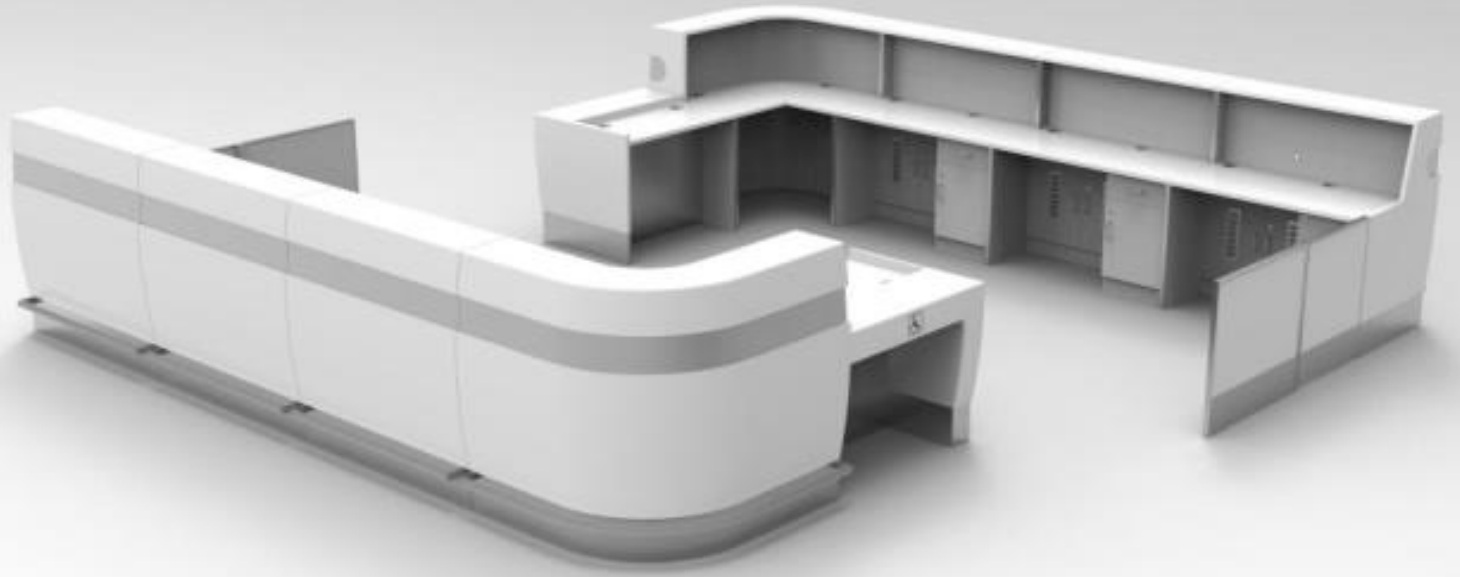
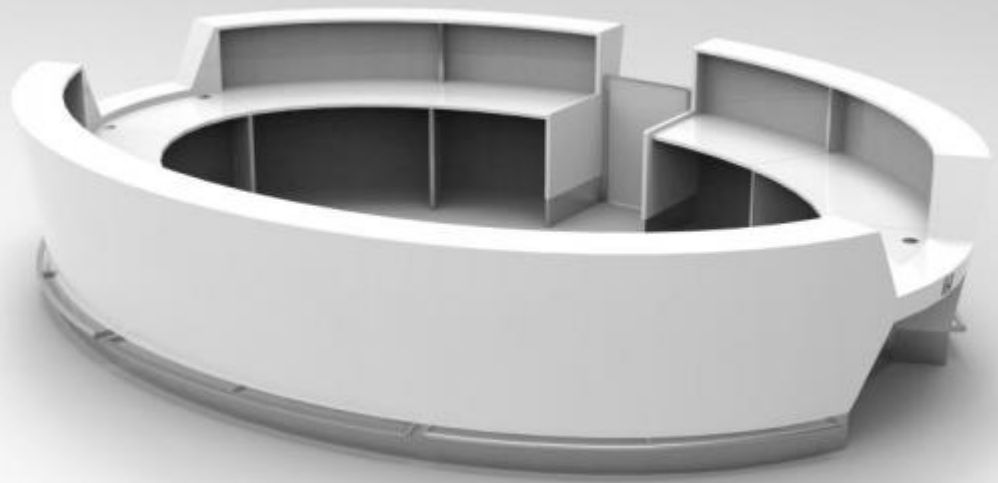
Top View



Left View



# BALCÃO DE INFORMAÇÃO

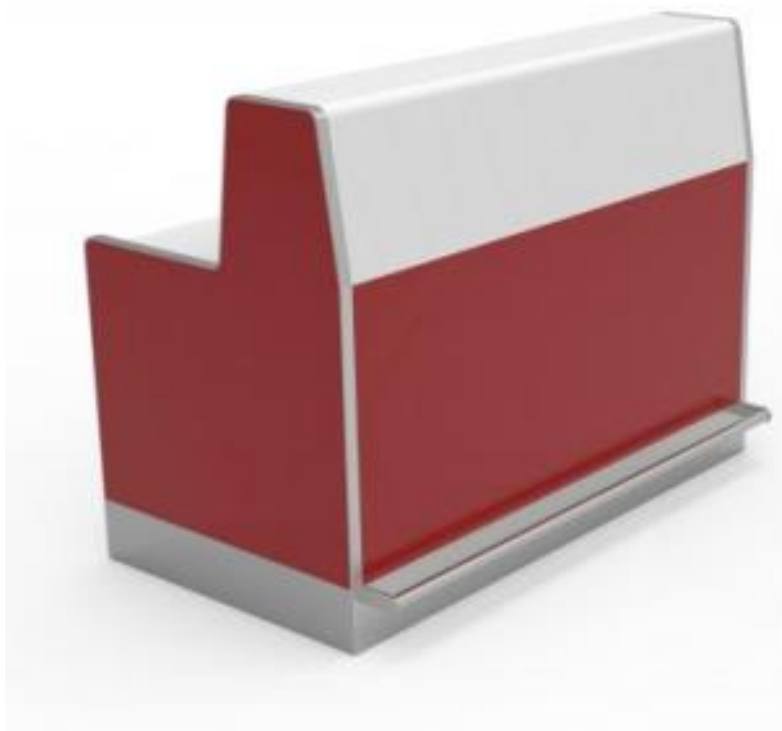


# BALCÃO DE CHECK-IN

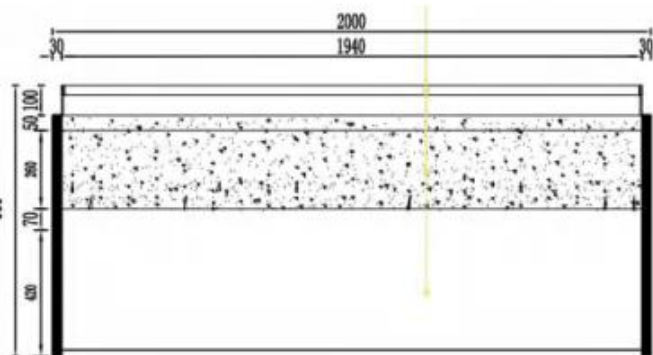




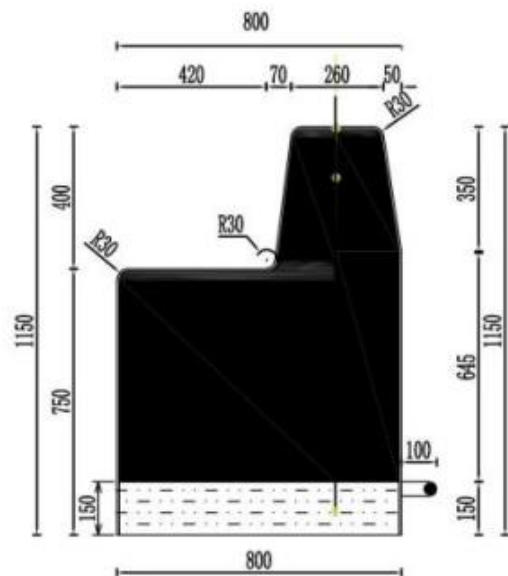
# BALCÃO DE CONTAGEM



# BALCÃO DE CONTAGEM



Top View



Left View



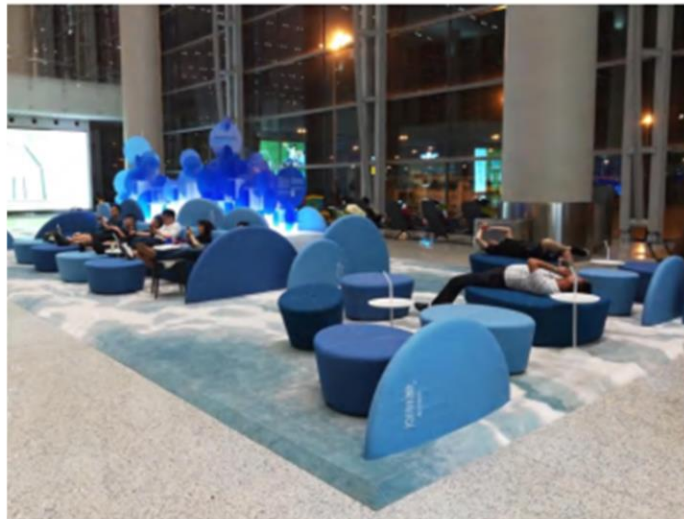


# ÁREA VIP





# ÁREA COMUM





# ACESSÓRIOS



# ACESSÓRIOS



Upgradeable 360°  
rotation function



## SJ35IR

**Telescopic head:** with brake device  
**Drawstrings:** 2.3 m long, 8 cm wide, single drawstring  
**Tube:** stainless steel 304, anti-fingerprint treatment  
**Base:** 9 kg cast iron bottom  
**Chassis:** 350 large rounded flat discs



## SJ35IR

**Telescopic head:** with brake device  
**Drawstrings:** 2.3 m long, 8 cm wide, Double Drawstrings  
**Tube:** stainless steel 304, anti-fingerprint treatment  
**Base:** 9 kg cast iron bottom  
**Chassis:** 350 large rounded flat discs



## 35IK-WH

**Telescopic head:** with brake device  
**Drawstring:** imitation nylon strap, single drawstring  
**Tube:** stainless steel 304, anti-fingerprint treatment  
**Base:** cast iron base  
**Chassis:** Stackable



## SJ32CD

**Telescopic head:** with brake device  
**Drawstring:** imitation nylon strap, single drawstring  
**Tube:** cold-rolled steel spraying  
**Base:** galvanized sheet cement base  
**Chassis:** cone



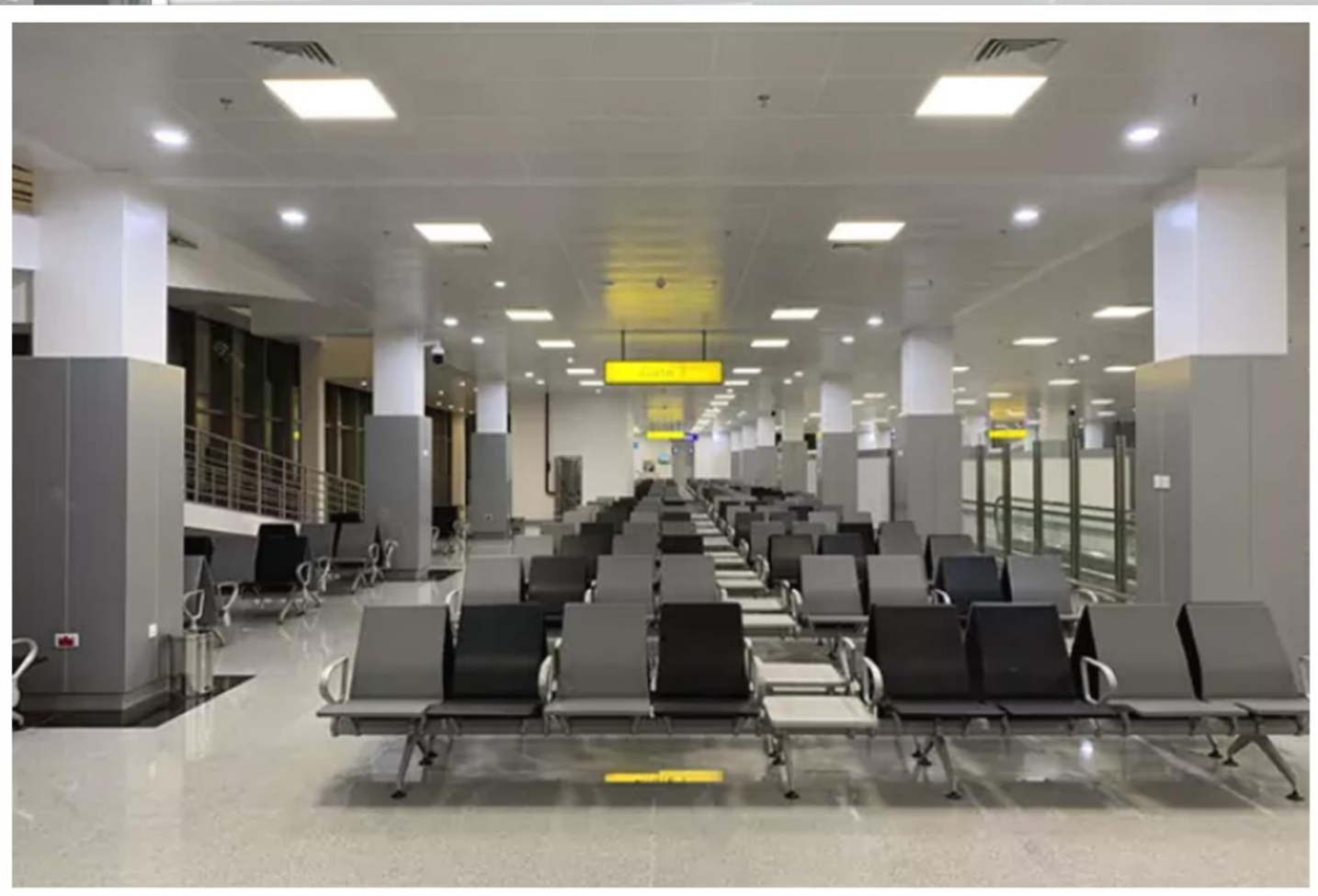
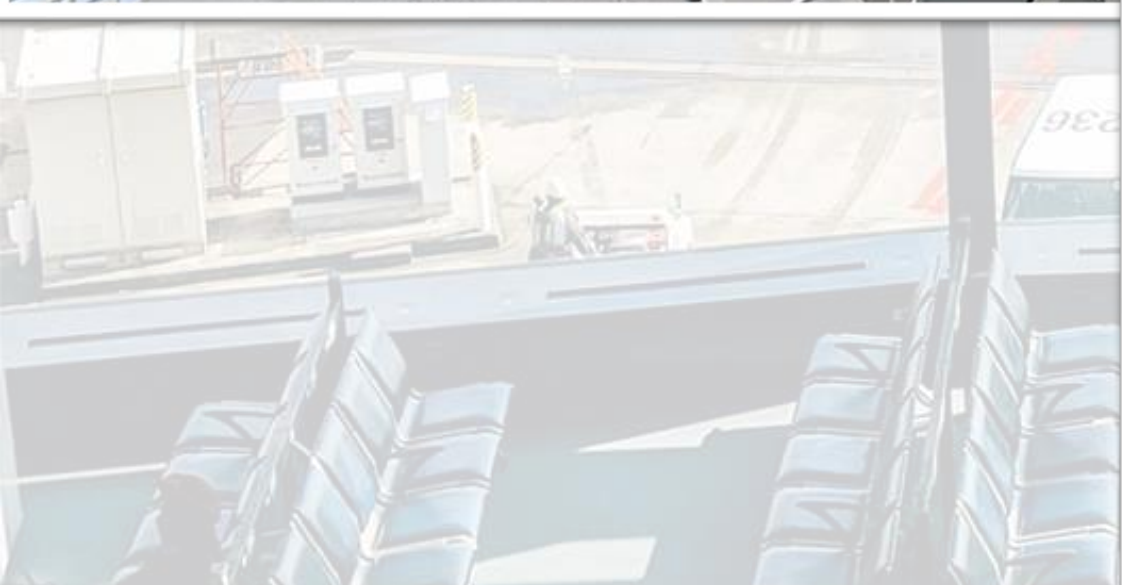
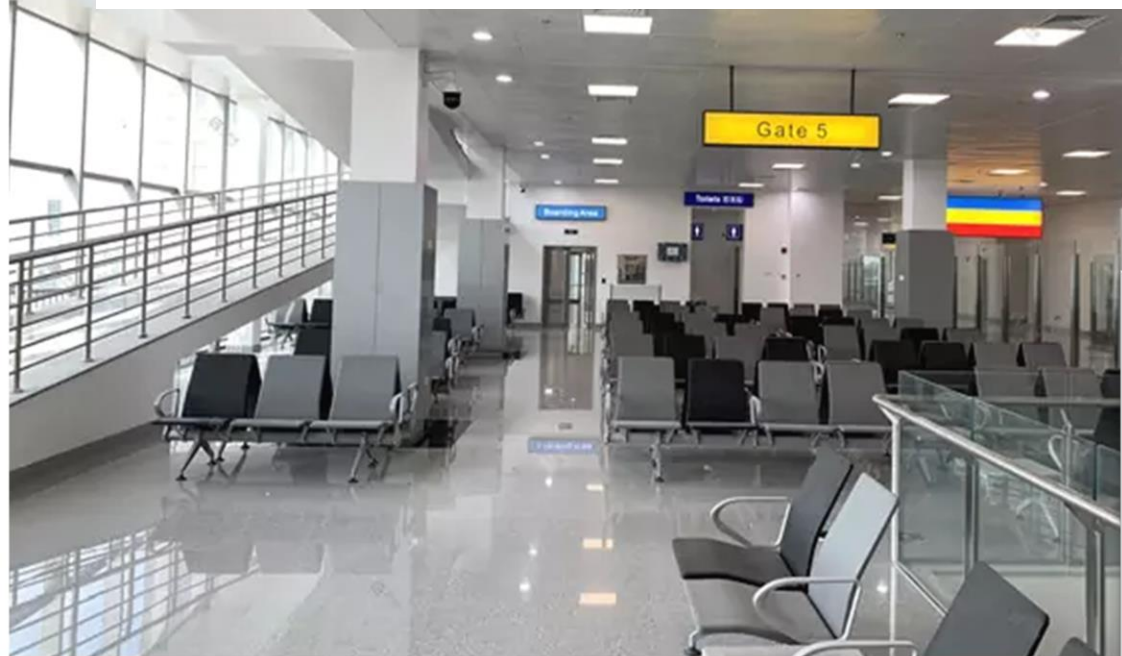


# CASES





# Abuja International Airport, Nigeria



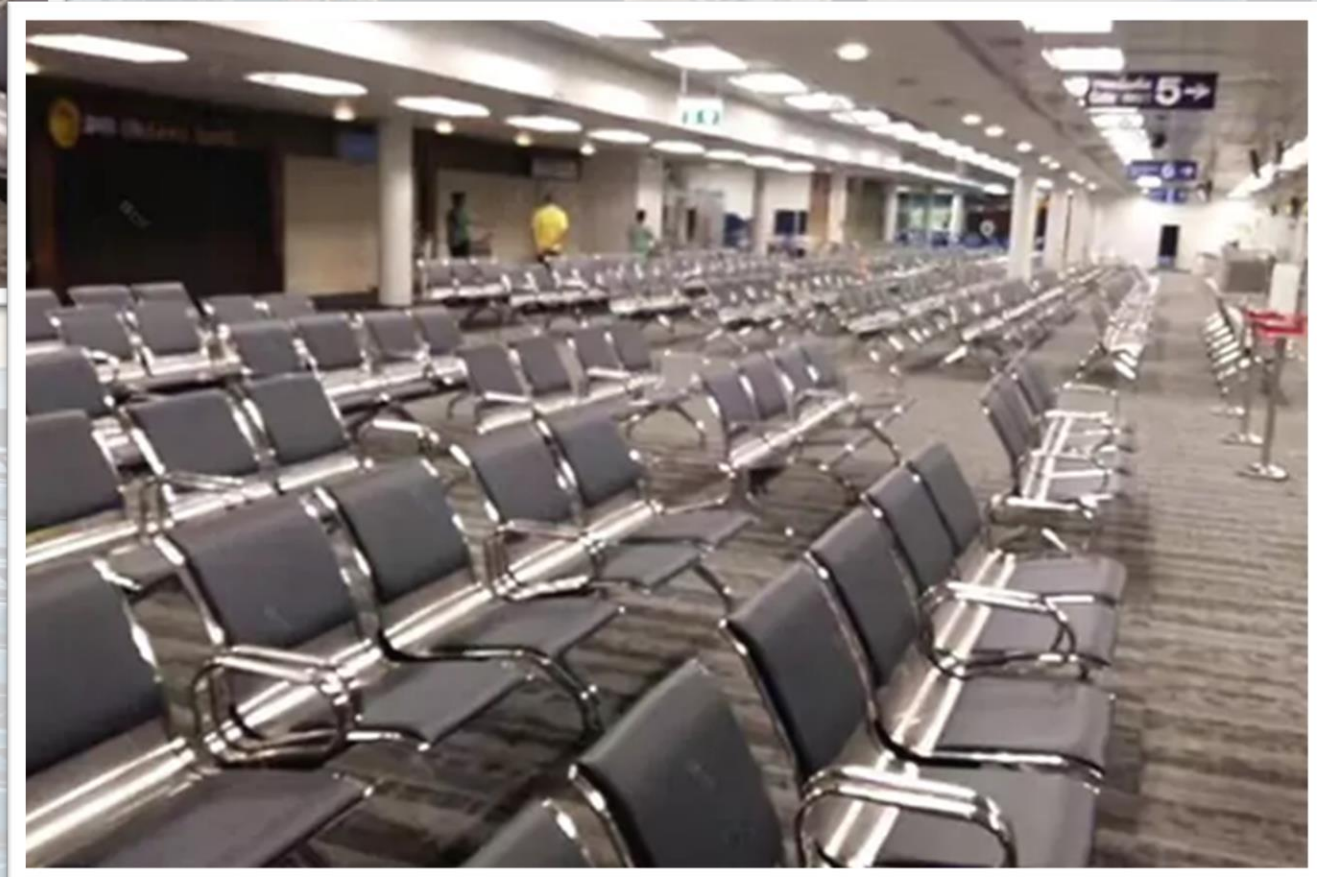
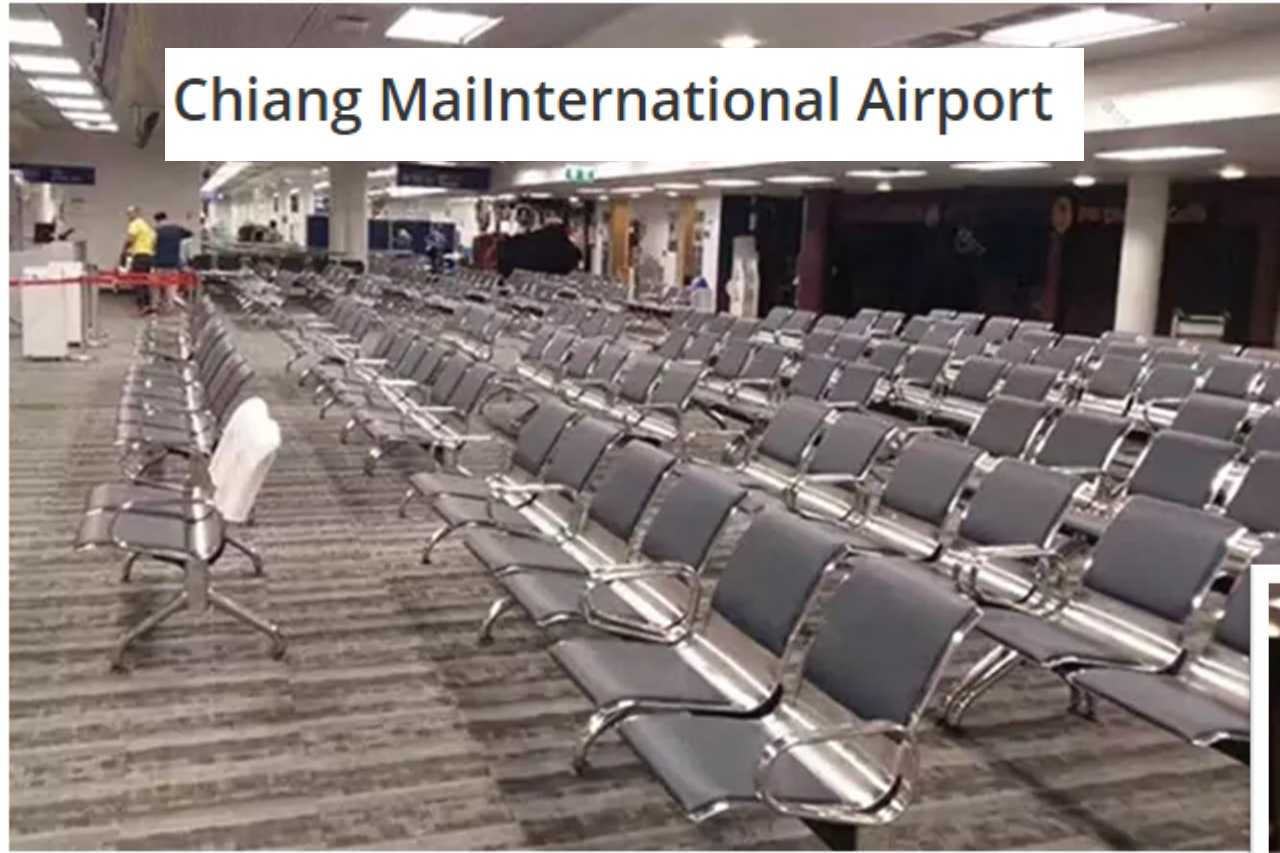


# Batangas Port Philippines



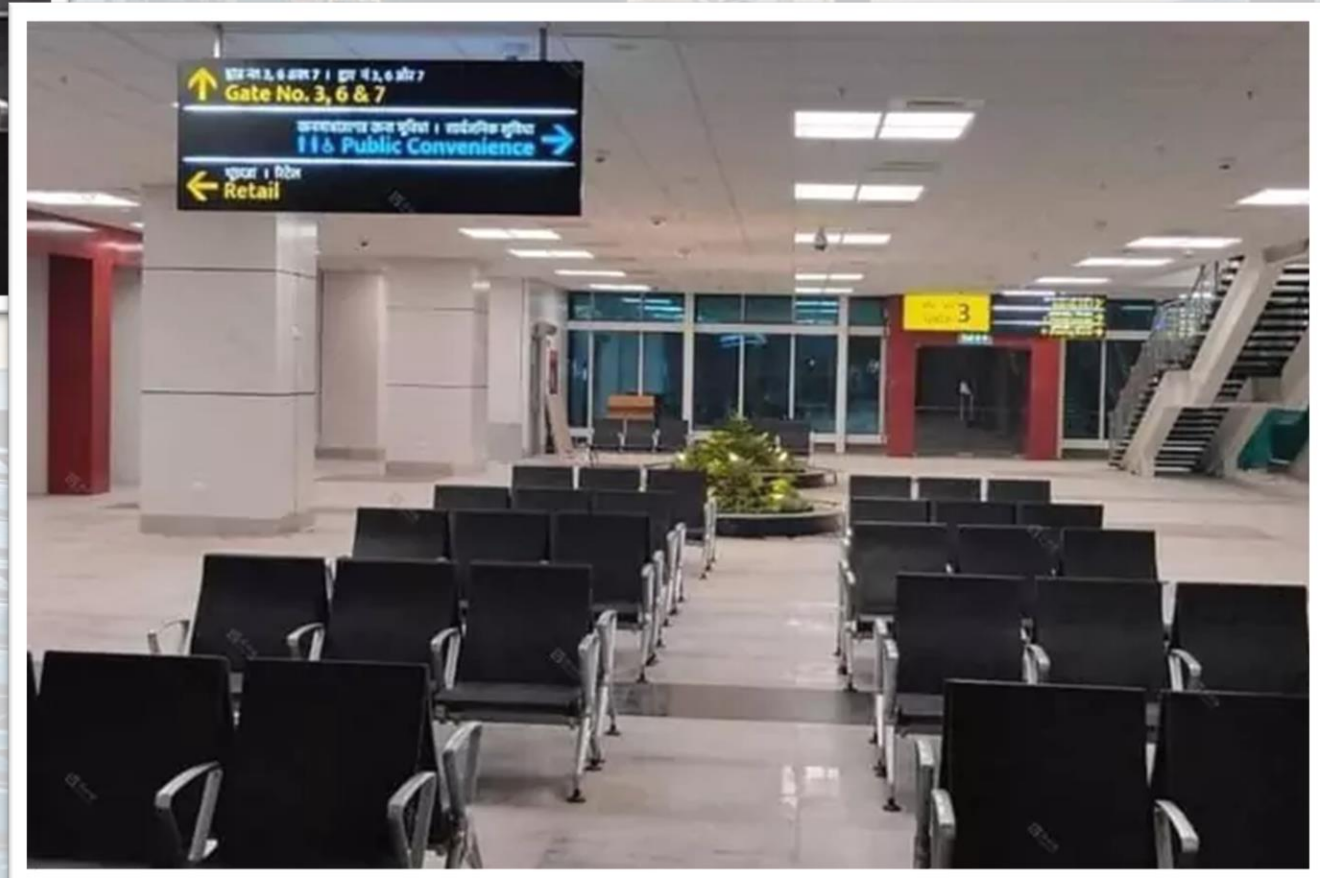


# Chiang Mai International Airport





# Agartala International Airport, India



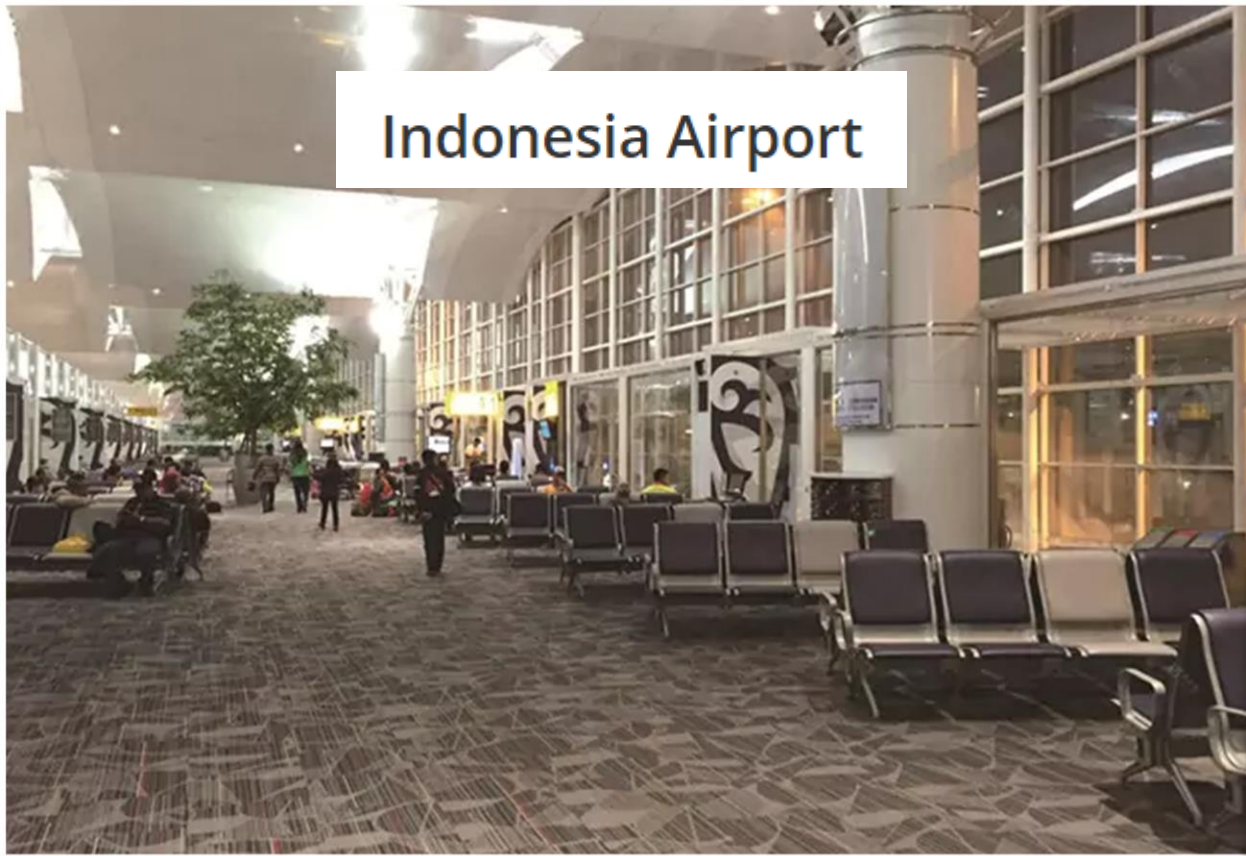


# Hatyai International Airport, Thailand





Indonesia Airport



Saudi Arabia Neom Bay Airport





# Owen Roberts International Airport







## Soekarno-Hatta International Airport, Jakarta



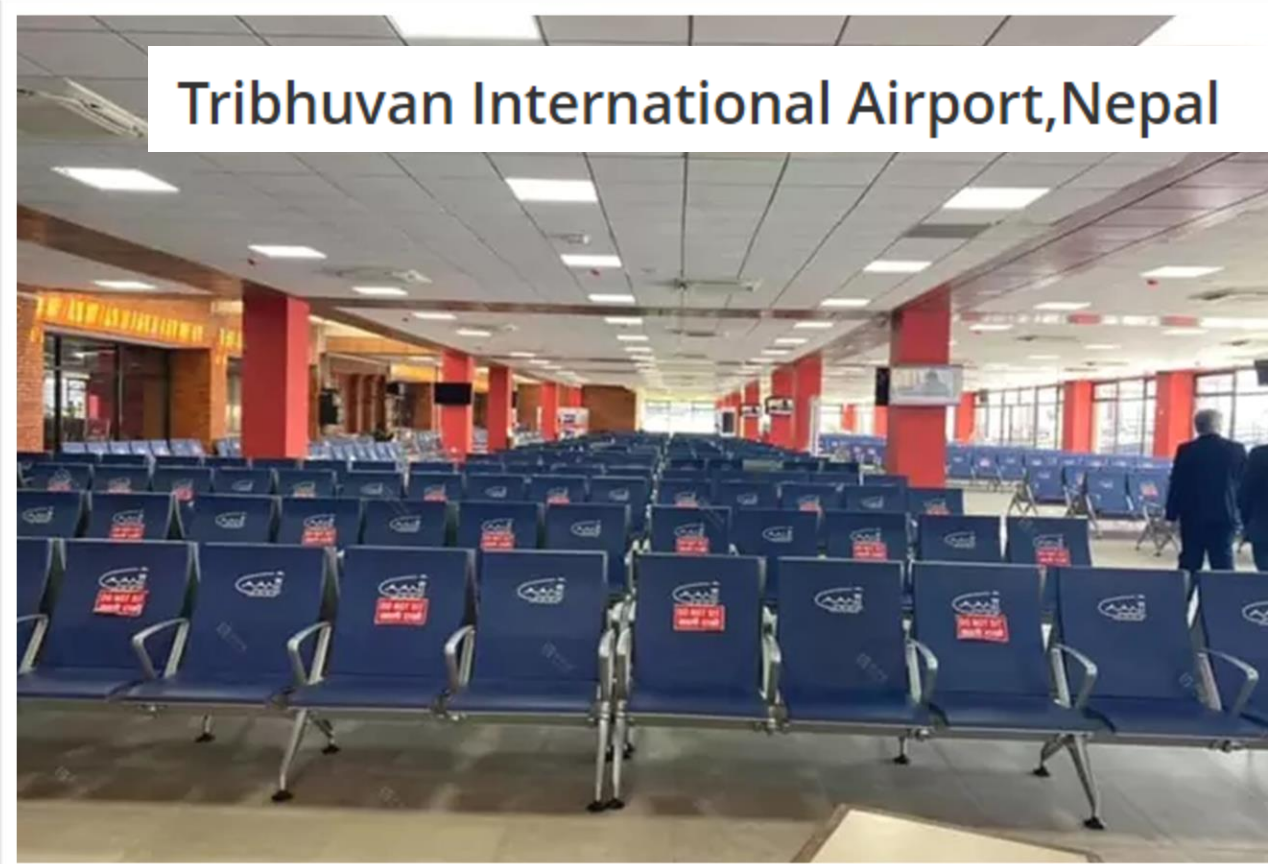


The Independent State of Papua

New Guinea Vanimo Airport

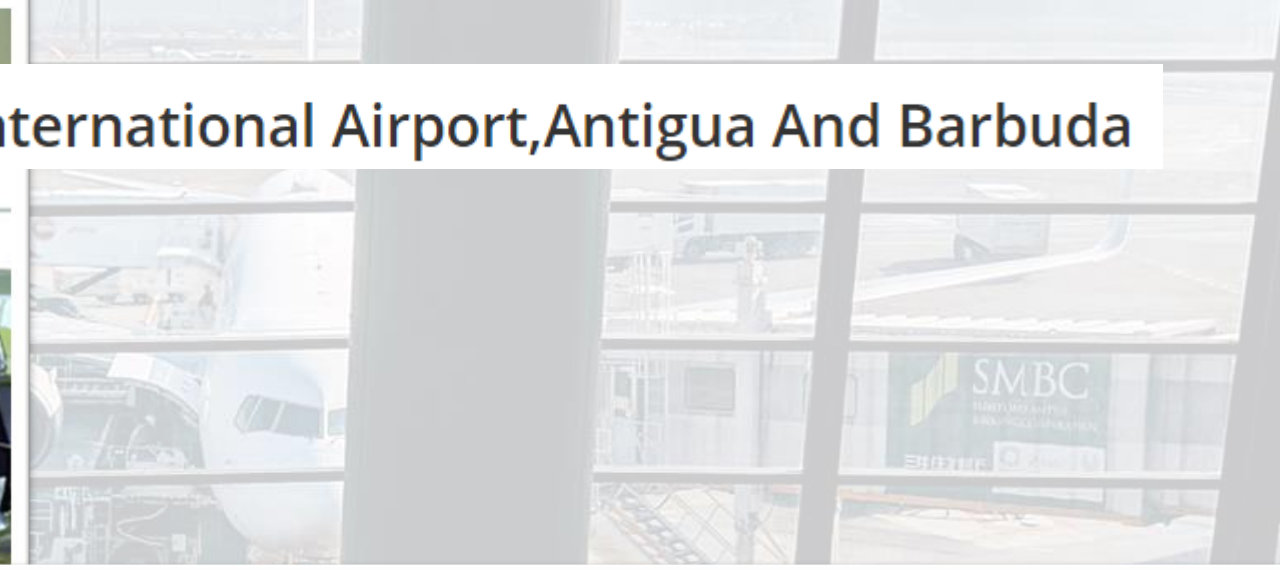
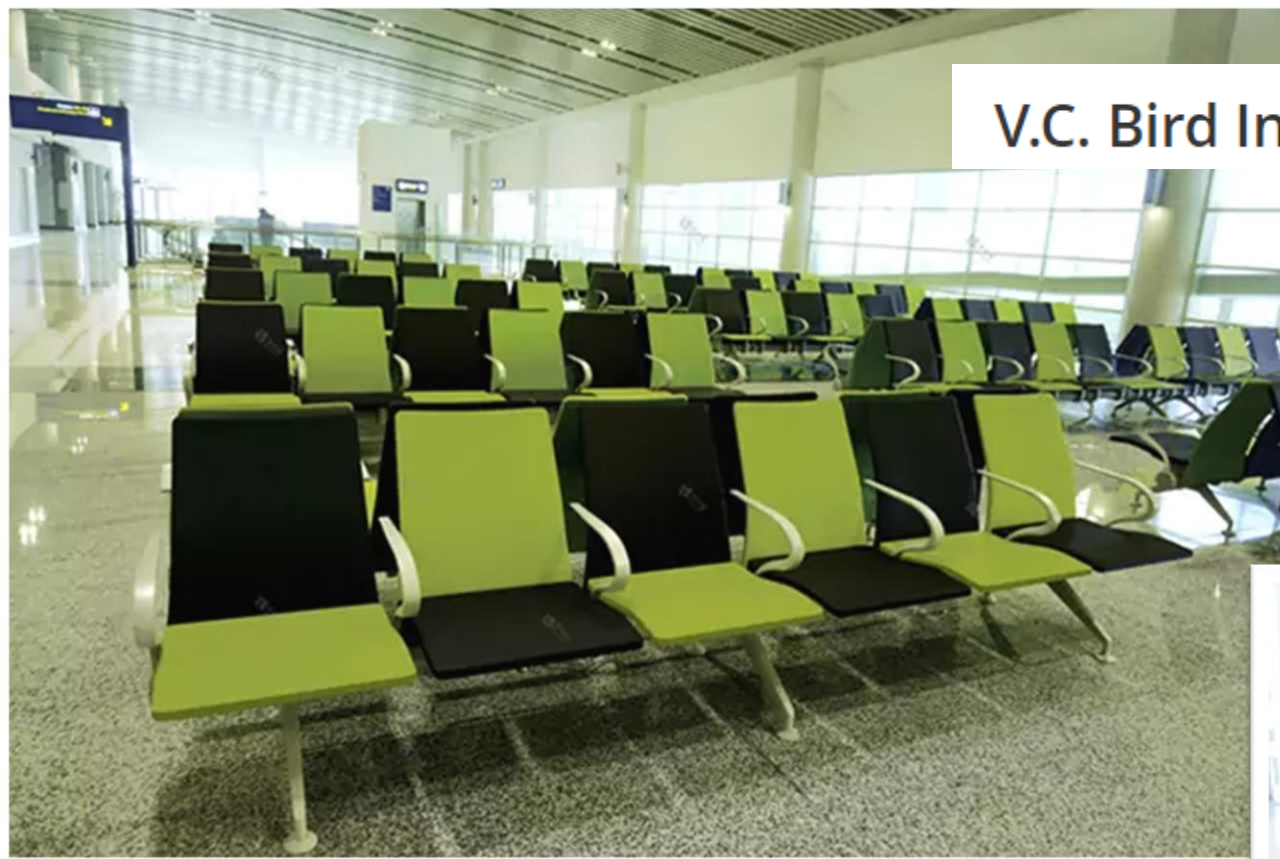


Tribhuvan International Airport, Nepal





# V.C. Bird International Airport, Antigua And Barbuda





# AGUARDANDO CONTATO

## GP Cabling and Security Solutions | Sede SP

 Rua Santa Cruz, 2105, sala 116 - Vila Mariana | São Paulo - SP | CEP 04121-002

 Retirada de material: Rua Barão de Monte Santo, 1300 - Mooca | São Paulo - SP | CEP 03123-020

 (11) 2065 - 0800



 **FALE CONOSCO**